

# Class 125 Bronze Y-Strainers

Screw-in Cap • Tapped Cap w/ Blow-off Plug or Solid Cap  
• 20 Mesh SS Screen or SS Perforated Screen

**125 PSI/8.6 Bar Saturated Steam to 353° F/178° C**  
**200 PSI/13.8 Bar Non-Shock Cold Working Pressure**

CONFORMS TO ANSI B1.20.1 (NPT) OR B16.18 (SOLDER)

## MATERIAL LIST

PART	SPECIFICATION
1. Body	Bronze ASTM B584 Alloy C84400 (Solder) Bronze ASTM B62 Alloy C83600 (Threaded)
2. Cap	Bronze ASTM B62 Alloy C83600
3. Gasket	PTFE
4. Screen	ASTM E2016 20 Mesh - 304 Stainless Steel or ASTM E674 Perforated - 304 Stainless Steel
5. Plug	Brass ASTM B16 Alloy C36000 or Bronze ASTM B584 Alloy C84400

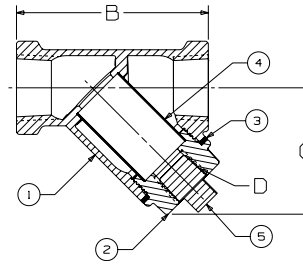
END CONNECTION	SCREEN	CAP
S - Solder	221 - 20 Mesh (STD.)	A - Tapped Cap w/Plug (STD.)
T - Threaded	222 - Perforated	B - Solid Cap

## DIMENSIONS—WEIGHTS—QUANTITIES

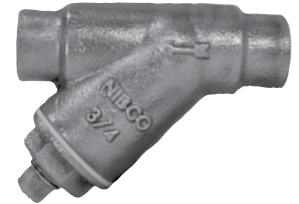
Size	Dimensions								T-221		S-221		Master Ctn. Qty.	
	A		B		C		D		Lbs.	Kg.	Lbs.	Kg.		
In.	mm.	In.	mm.	In.	mm.	In.	mm.	In.	mm.	Lbs.	Kg.	Lbs.	Kg.	
1/4	8	1.75	45	2.53	64	1.79	46	1/4	8	0.74	0.33	—	—	50
3/8	10	1.75	45	2.53	64	1.79	46	1/4	8	0.72	0.32	—	—	50
1/2	15	1.75	45	2.53	64	1.79	46	1/4	8	0.81	0.37	0.57	0.26	50
3/4	20	2.20	56	3.25	83	2.15	55	3/8	10	1.13	0.51	1.01	0.46	30
1	25	2.59	66	3.77	96	2.82	72	3/8	10	1.85	0.84	1.58	0.72	25
1 1/4	32	3.27	83	4.56	116	3.25	83	3/4	20	2.96	1.34	2.69	1.22	10
1 1/2	40	3.59	114	5.24	133	3.63	92	3/4	20	4.47	2.03	3.99	1.81	10
2	50	4.44	113	5.95	151	5.00	127	1	25	7.43	3.37	6.94	3.15	6
2 1/2	65	—	—	7.98	203	5.70	145	1 1/4	32	14.94	6.78	—	—	3
3	80	—	—	9.28	236	6.52	166	1 1/2	40	21.68	9.84	—	—	2



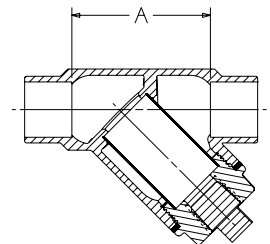
**T-221/222-A**  
Threaded



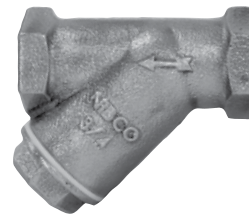
**T-221/222-A**  
Threaded



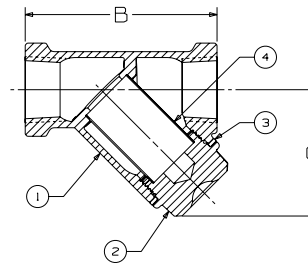
**S-221/222-A**  
Solder



**S-221/222-A**  
Solder



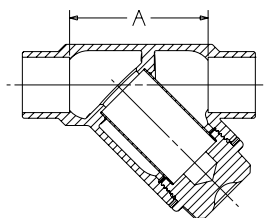
**T-221/222-B**  
Threaded



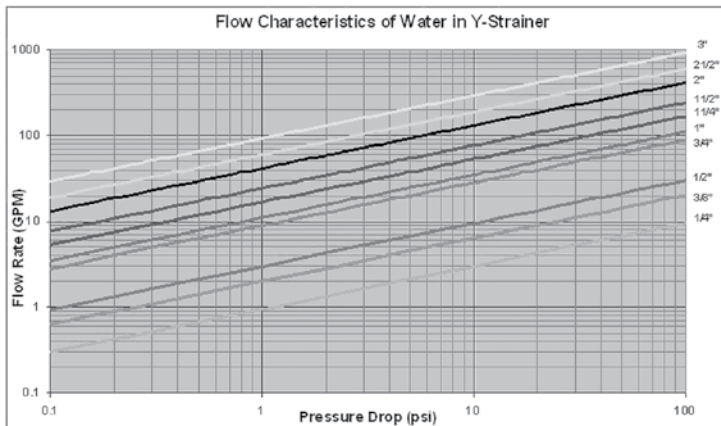
**T-221/222-B**  
Threaded



**S-221/222-B**  
Solder



**S-221/222-B**  
Solder



Visit our website for the most current information.