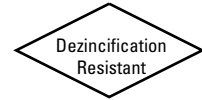


Bronze Ball Valves

Three-Piece Body • Full Port • 316SS Internal Trim • 300 Series External Trim • Blowout-Proof Stem • Vented Ball



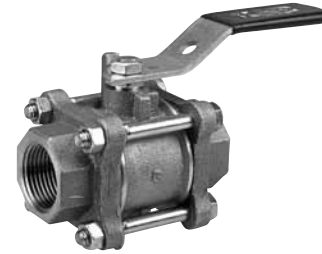
600 PSI/41.4 Bar Non-Shock Cold Working Pressure
150 PSI/10.3 Bar Saturated Steam ◆

CONFORMS TO MSS SP-110

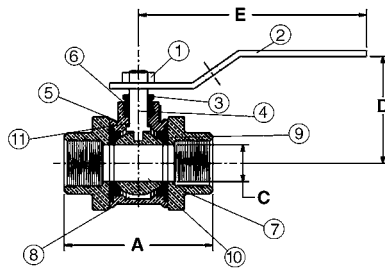
MATERIAL LIST

PART	SPECIFICATION
1. Handle Nut	300 Series Stainless Steel
2. Handle	300 Series Stainless Steel with Plastisol Grip
3. Threaded Pack Gland	Brass ASTM B 16 Alloy C36000
4. Stem	Stainless Steel ASTM A 276 Type 316
5. Body	Bronze ASTM B 584 Alloy C84400
6. Packing	PTFE
7. Body End (2)	Cast Bronze ASTM B 584 Alloy C84400
8. O-Ring Seal (2)	Fluorocarbon Rubber
9. Seat Ring (2)	PTFE
10. Ball (Vented)	Stainless Steel ASTM A 276 Type 316 or ASTM A 351 Type CF8M
11. Thrust Washer	Reinforced PTFE
12. Body Bolts	300 Series Stainless Steel
13. Body Nuts	300 Series Stainless Steel

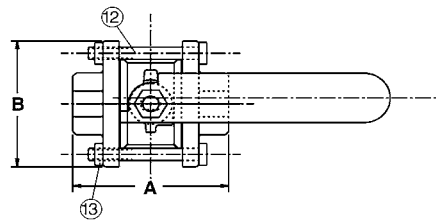
Note: Valves are static grounded by a grounding washer. (Not Shown)



T-595-Y-66-SS
Threaded



T-595-Y-66-SS
NPT x NPT



DIMENSIONS—WEIGHTS—QUANTITIES

Size	Dimensions						T-595-Y-66-SS		Master Ctn.	Qty.				
	In.	mm.	A In.	mm.	B In.	mm.	C In.	mm.			D In.	mm.	E In.	mm.
1/4	8	2.50	64	1.81	46	.38	10	1.69	43	3.91	99	1.03	.47	50
3/8	10	2.50	64	1.81	46	.38	10	1.69	43	3.91	99	.98	.44	50
1/2	15	2.50	64	1.81	46	.50	13	1.69	43	3.91	99	1.03	.47	50
3/4	20	3.00	76	1.94	49	.75	19	2.00	51	4.66	118	1.70	.77	30
1	25	3.69	94	2.50	64	1.00	25	2.25	57	4.66	118	2.82	1.28	20
1 1/4	32	4.09	104	2.69	68	1.25	32	2.75	70	6.69	170	3.96	1.80	10
1 1/2	40	4.56	116	3.00	76	1.50	38	2.97	75	6.69	170	5.68	2.57	10
2	50	6.16	156	4.00	102	2.00	51	3.63	92	6.69	170	11.40	5.17	4
2 1/2	65	6.84	174	5.00	127	2.50	64	4.09	104	8.00	203	21.07	9.56	2

◆ For detailed Operating Pressure, refer to Pressure Temperature Chart on page 41.