

# 250 PSI Butterfly Valves

Ductile Iron Body • Extended Neck • Geometric Drive  
Molded-in Seat Liner • Lug and Wafer Style

## Sizes 2" through 12"

Install between Std. ASME Class 125/150 Flanges  
Lug Style 250 PSI bi-directional dead end service rating without a downstream flange required.

DESIGNED TO MEET MSS SP-67 STANDARD  
U.S. COAST GUARD "CATEGORY A"

### MATERIAL LIST

PART	SPECIFICATION
1. Stem	Stainless Steel ASTM A582 Type 416
2. Collar Bushing	Brass ASTM B16
3. Stem Seal	EPDM Rubber
4. Body Seal	EPDM Rubber
5. Nameplate	Aluminum
6. Upper Bushing	Copper CDA 122
7. Liner	EPDM Rubber
8. Disc	Ductile Iron ASTM A395 (plated)
9. Lower Bushing	Copper CDA 122
10. Body Wafer	Ductile Iron ASTM A536
11. Body Lug	Ductile Iron ASTM A536

### DIMENSIONS — WEIGHTS

Size												
In.	Mm.	A	B	C	D	E	F	G Flat	Metal H	Rubber I	J Square	N Dia.
2	50	2.53	4.00	1.25	5.38	2.88	.38	.312	1.688	1.812	3.25	.500
2½	65	2.90	4.69	1.25	5.88	3.27	.38	.370	1.812	1.938	3.25	.562
3	80	3.15	5.12	1.25	6.12	3.40	.38	.370	1.812	1.938	3.25	.562
4	100	4.09	6.12	1.25	6.88	4.00	.38	.403	2.062	2.188	3.25	.625
5	125	5.13	7.25	1.25	7.38	4.75	.38	.496	2.188	2.312	3.25	.750
6	150	6.13	8.25	1.25	8.00	5.29	.38	.496	2.188	2.312	3.25	.750
8	200	8.13	10.41	1.25	9.25	6.50	.50	.560	2.375	2.500	3.25	.875
10	250	10.13	12.52	1.25	10.50	8.00	.50	.686	2.688	2.812	4.75	1.125
12	300	12.13	15.00	1.25	12.00	9.25	.50	.748	3.000	3.125	4.75	1.250

### Capscrew/Stud Data

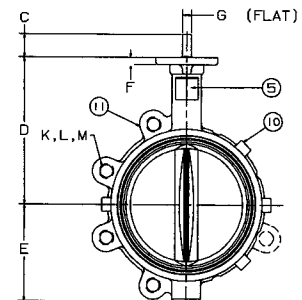
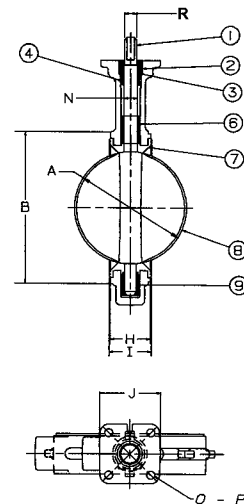
Size	O In. mm.	P B.C.	R Dia.	K No.	L Dia.	Wafer Length	Lug Length	M		Lug Weight		Wafer Weight	
								B.C.	Lbs.	Kg.	Lbs.	Kg.	
2	50	3.25	.437	.437	4	5/8-11unc	Refer to butterfly valve technical information for bolt lengths	4¾	7	3.2	5.5	2.5	
2½	65	3.25	.437	.500	4	5/8-11unc		5½	9	4.1	7.5	3.4	
3	80	3.25	.437	.500	4	5/8-11unc		6	9.5	4.3	8	3.6	
4	100	3.25	.437	.562	8	5/8-11unc		7½	15	6.8	11	5.0	
5	125	3.25	.437	.656	8	¾-10unc		8½	21	9.5	15	6.8	
6	150	3.25	.437	.656	8	¾-10unc		9½	24	10.9	18	8.2	
8	200	3.25	.437	.781	8	¾-10unc		11¼	34	15.4	28	12.7	
10	250	5.00	.562	1.000	12	7/8-9unc		14¼	62	28.1	45.5	20.7	
12	300	5.00	.562	1.062	12	7/8-9unc		17	90	40.9	70	31.8	

For actuated service where a lower torque is required use NIBCO Fig. No. WDLXXX-0 or LDLXXX-0 series, sizes 2" thru 12" only. Maximum pressure rating of 100 PSI for wet application and 50 PSI for dry application



**WD 3010**  
Wafer Style  
EPDM Liner  
and Ductile Disc

**LD 3010**  
Lug Style  
EPDM Liner  
and Ductile Disc



NOT RECOMMENDED  
FOR STEAM SERVICE